



Workplace Matting Solutions

Overview

The implementation of innovative matting systems will ensure that both your workplace and your workforce are maintained in pristine condition.

Our comprehensive matting division serves commercial, industrial, and retail environments with reliable products from UK and worldwide sources to provide consistent quality at competitive prices.

Benefits

- Protection – prevent the damp and dirt from damaging your interior flooring
- Presentation – keeps your workplace presentable by reducing interior soiling
- Publicity - utilise bespoke logo matting designs to promote your brand message
- Productivity – boost employee output levels with anti-fatigue comfort matting

Creative Logo Mat Designs

Bespoke logo matting designs act as a dual solution as not only do they create a high visual impact, but also provide maximum floor protection. Corporate logo mats are an ideal way to reinforce your branding and promote your corporate colours or advertising slogan in an area that usually goes unnoticed.

EMAIL IN YOUR ARTWORK
TODAY FOR A COMPLIMENTARY
FREE PROOF!



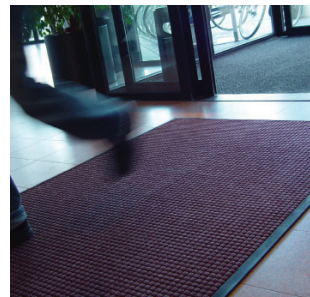
Interior & Exterior Entrance Matting

With first impressions of your business starting at the entrance, the cleanliness of your reception area says a lot about your company. Quality entrance matting systems will dramatically reduce interior soiling by stopping the damp & dirt at the door, ensuring a good first impression and effective dirt control in any doorway.



Heavy Duty Trap Mats

In high traffic areas such as public venues, factories and busy entrances, heavy duty entrance matting is a necessity. The toughened mat fibres scrape debris off muddy shoes whilst effectively absorbing up to 6 litres of moisture per square metre, ensuring a high performance matting solution all-round.



Industrial & Anti-fatigue Matting

Standing for long periods of time on cold, hard floors causes general fatigue plus a host of other health complaints. Industrial mats are designed to reduce these occupational risks and create a safe, comfortable working environment that in turn will boost productivity levels.

